

Environmental Stewardship Project Funding

9.22.2022



NEWPORT
KENTUCKY



Campbell County Extension Service Funding

The Environmental Stewardship Project funding opportunity is sponsored by the Campbell County Extension District Board. The Board has allocated \$15,000 for environmental stewardship projects in Campbell County that benefit the public.

Total Award for Newport:
\$999.99

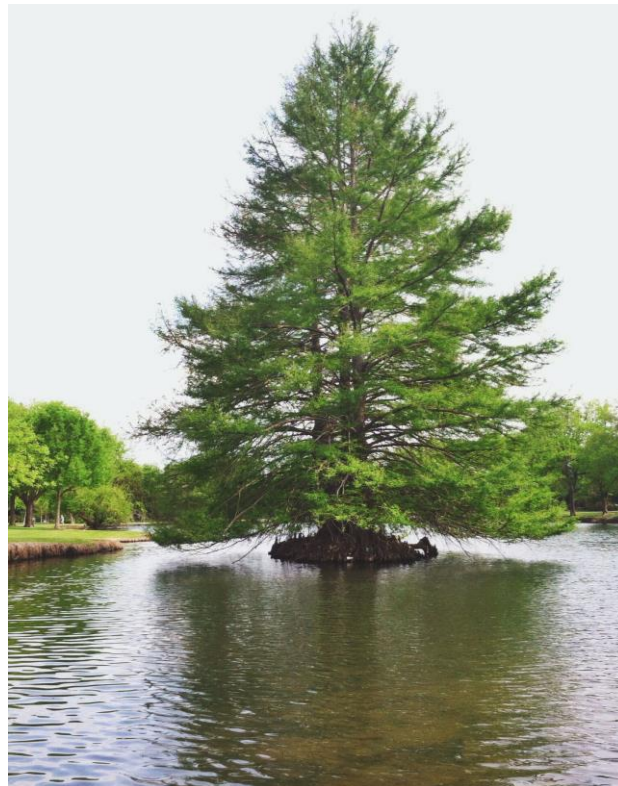


Northern Catalpa Tree

Tree Species Options

Trees must

- Not be invasive species
- Be able to withstand Ohio River flooding
- Not interfere with powerlines
- Be able to grow in difficult soil
- Not interfere with the Army Corp of Engineers Ecosystem Restoration Project

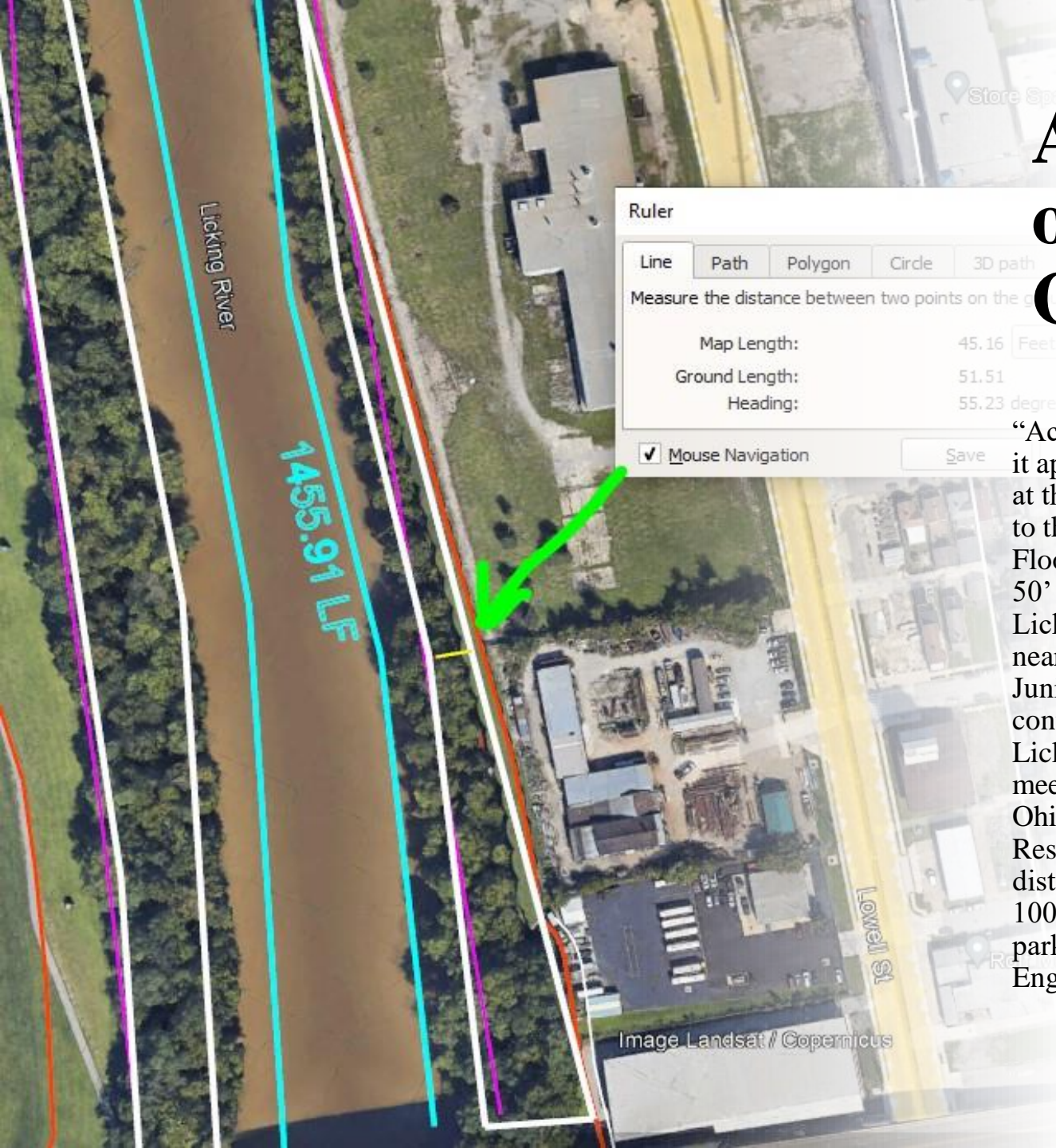


Bald Cypress Tree



Black Gum Tree

Army Corp of Engineers Guidelines



“According to the feasibility study, it appears our working limits begin at the water’s edge and then extend to the closest paved road. In the Floodplain Forest area, I get about 50’ from the water’s edge along the Licking River then increases to 150’ near the W 4th St bridge/Cincinnati Junior Rowing Club area and continues at that width where the Licking and Ohio Rivers meet. When distancing along the Ohio River edge in the Shoreline Restoration areas, I am getting a distance near 100’; but some of that 100’ extends into the nearest paved parking area.” – Army Corp of Engineers

Location One 3-4 Trees

The benefits of this location

- The Ohio River rarely floods high enough to impact the trees.
- The trees will provide shade for the playground and picnic benches.
- The trees will not interfere with the powerlines.



Location Two 3-4 Trees

The benefits of this location

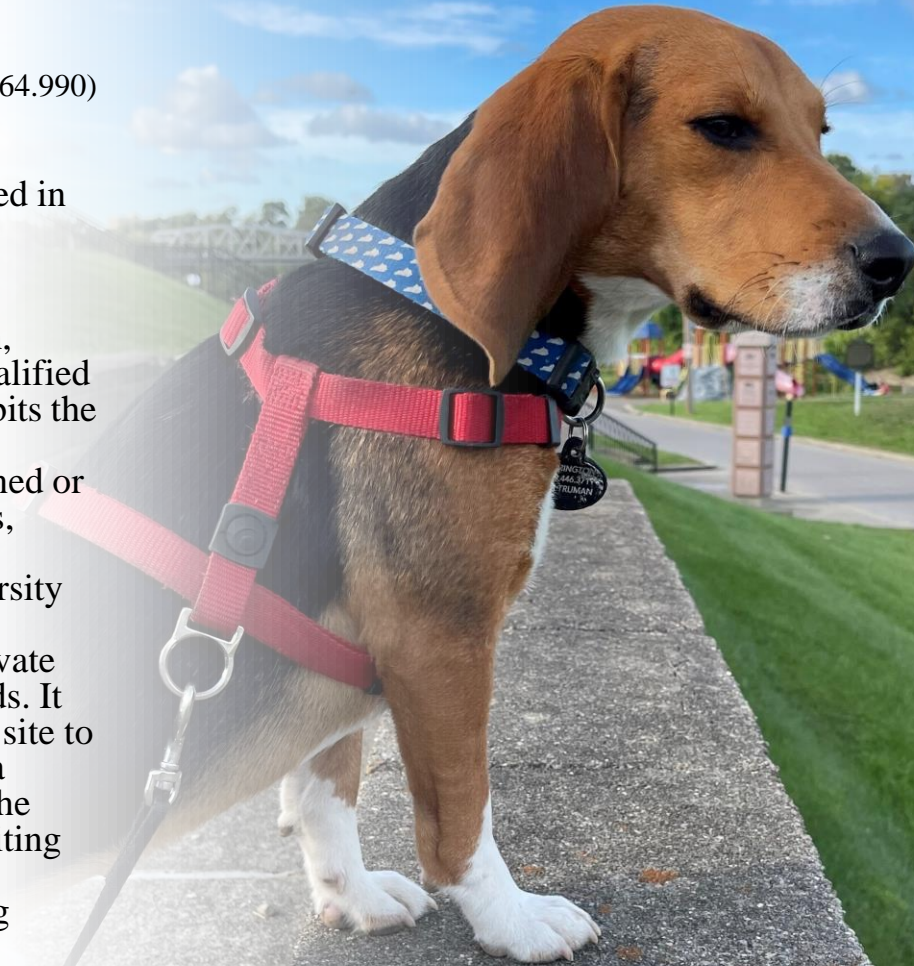
- The Ohio River rarely floods high enough to impact the trees.
- The trees will provide shade for the picnic benches.
- The trees will not interfere with the powerlines.



Kentucky Antiquities Act

(KRS 164.705 - KRS 164.735; KRS 164.990)

This is known as the Kentucky Antiquities Act, which was created in 1962. It makes it public policy to preserve archaeological sites and objects of antiquity and to limit archaeological work (exploration, excavation, and collection) to qualified persons and institutions. It prohibits the willful damage or destruction of archaeological sites on lands owned or leased by the state, state agencies, counties, or municipalities, and requires a permit from the University of Kentucky's Department of Anthropology to explore or excavate archaeological sites on these lands. It requires anyone who discovers a site to report it to the Department. It is a felony to violate the sections of the Kentucky Antiquities Act prohibiting the willful destruction of archaeological sites and requiring permits to excavate.





I have
questions

We will do our best to answer anything tonight. You can email additional questions to lobrien@newportky.gov